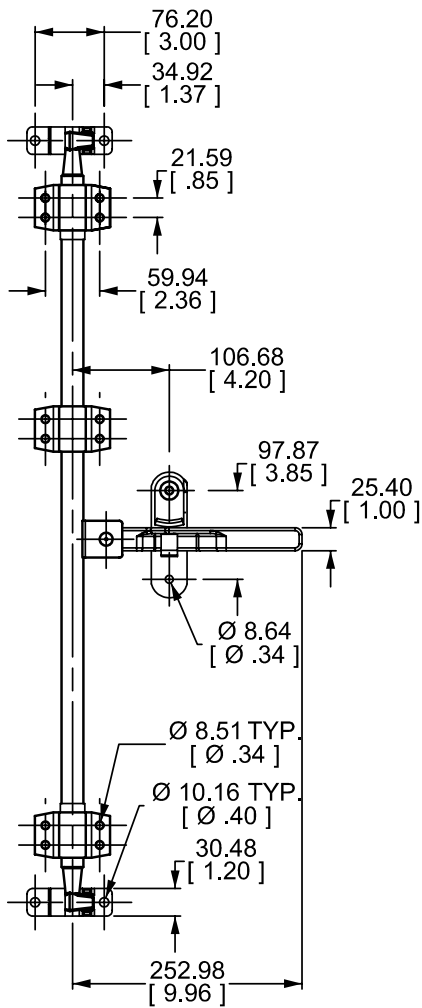


Light duty compression cam locks

Prod. #: **703-0533** RH
Prod. #: **703-0526** LH

Zinc plated
2-point lock
Anti-Rack mini-lock for 5/8" (15 mm) O.D. tubing (tubing not included).
Ideal for small rental trailers, heavy tool boxes, etc.

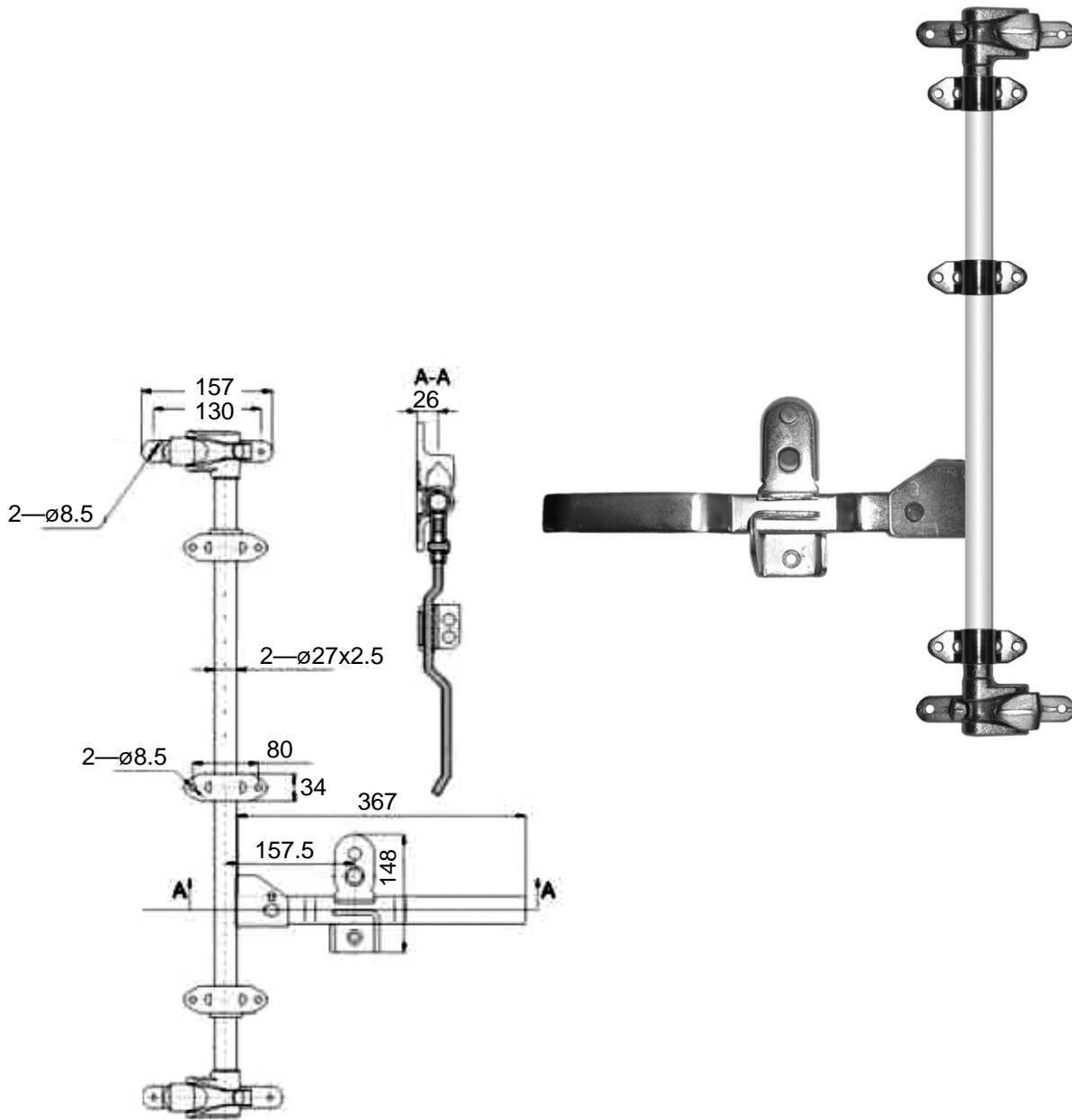


REV. 09/2011

Light duty compression cam lock

Prod. #: **703-0357** Compression cam lock

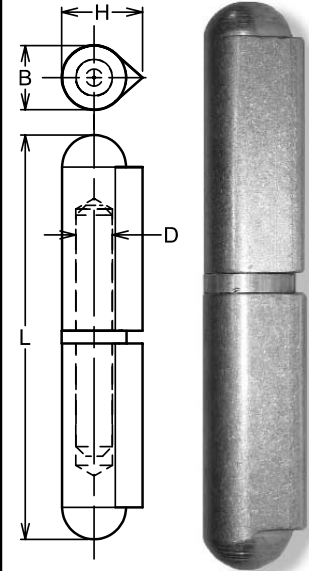
Zinc plated
2 point lock
For $\frac{3}{4}$ nps and 1.050" O.D. tubing (tubing not included).
Cams and keepers are of malleable steel.



REV. 09/2011

Steel weld-on hinge, brass & steel pins

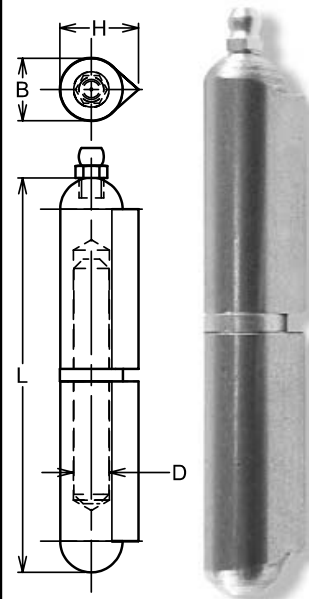
Brass pin Prod. #	Steel pin Prod. #	Length L (mm) (inches)	Diameter B (mm)	Thickness H (mm)	Diameter (pin) D (mm) (inches)
752-4388		40 1 9/16"	8	9.5	5 0.20"
752-4395		50 2"	8	10	5 0.20"
752-4405		60 2 3/8"	10	12	6 0.24"
752-0150		60 2 3/8"	10	12.5	5.5 0.22"
752-4412		70 2 3/4"	11.5	13.5	6 0.24"
752-4437		80 3 3/16"	13	15	8 0.32"
752-0231		80 3 3/16"	13	16	7 0.28"
752-4363	752-4444	100 4"	16	20	10 0.39"
752-0111	752-3916	100 4"	16	20	9 0.35"
752-4677		120 4 3/4"	16	20	11 0.43"
752-0249		120 4 3/4"	16	20	9 0.35"
752-4370	752-4451	150 6"	20	25	13 0.51"
752-0182	752-1242	150 6"	20	25	11 0.43"
752-4469		180 7"	20	25	14 0.55"
752-0288		180 7"	20	25	12 0.47"
	752-4476	200 8"	23	28.5	16 0.63"



D
HINGES

Steel weld-on hinges with grease fitting

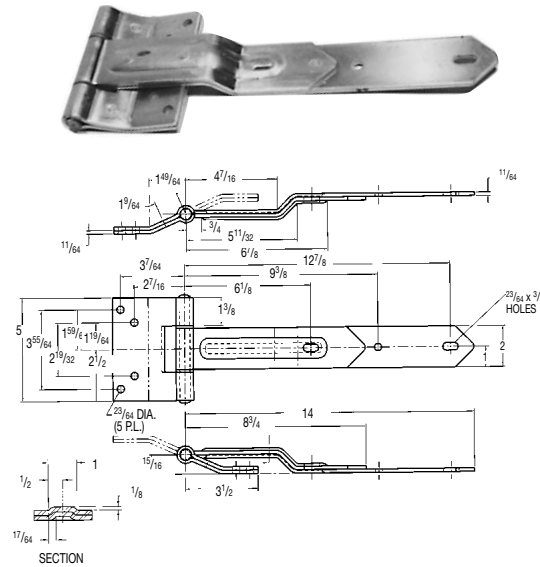
Steel pin Prod. #	Length L (mm) (inches)	Diameter B (mm)	Thickness H (mm)	Diameter (pin) D (mm) (inches)
752-4532	80 3 3/16"	13	16	8 0.32"
752-0665	80 3 3/16"	13	16	7 0.28"
752-4483	100 4"	16	20	10 0.39"
752-0672	100 4"	16	20	9 0.35"
752-4490	120 4 3/4"	16	20	10 0.43"
752-1299	120 4 3/4"	16	20	9 0.35"
752-4500	135 5 1/4"	18	22	13 0.47"
752-0802	135 5 1/4"	18	22	10 0.39"
752-4518	150 6"	20	25	13 0.51"
752-0697	150 6"	20	25	11 0.43"
752-4520	180 7"	20	25	13 0.55"
752-1281	180 7"	20	25	12 0.47"
752-4525	200 8"	23	28.5	16 0.63"



14" hinge

Prod. #: **754-1150**

Flush mount
Aluminum

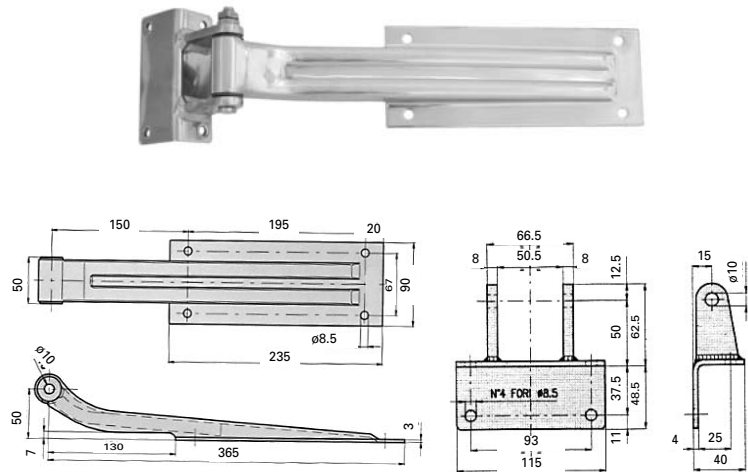


14.37" over-the-seal stainless hinge

Prod. #: **755-4008**

Flush mount
Polished stainless steel
Space for a door seal.
8 stainless steel socket head screws
5/16"-18 x 1 1/4" included.

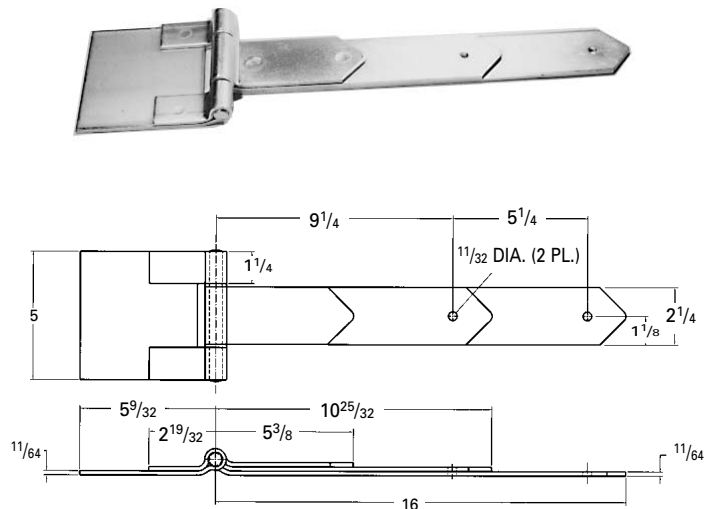
Measurements are metric



16" hinges

Prod. #: **755-1134** Zinc plated steel
Prod. #: **755-1141** Aluminum

Flush mount



REV. 09/2011

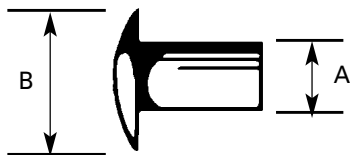
Solid aluminum rivets "Brazier" dome head

1100-F Alloy (Soft)

Prod. #	Dia. A - B	x	Length	Qty/lbs.
981-0271	3/16" - 0.469		3/8	523
981-0031	3/16" - 0.469		1/2	443
981-0063	3/16" - 0.469		5/8	384
981-0345	1/4" - 0.625		1/2	220

2117-T4 Alloy (Hard)

Prod. #	Dia. A - B	x	Length	Qty/lbs.
981-0024	3/16" - 0.469		3/8	523
981-0056	3/16" - 0.469		1/2	443
981-0088	3/16" - 0.469		5/8	384
981-0144	1/4" - 0.625		1/2	222
981-0151	1/4" - 0.625		5/8	195
981-0391	1/4" - 0.625		3/4	174



Nylon anchors

Zinc plated steel pin, dome head, white color.

Prod. #	Dia.	x	Length	Qty/box
985-0852	1/4"	x	1"	100



Completely nylon, dome head, white color.

Prod. #	Dia. x Length	Grip	Qty/box
983-3374	1/4" x 3/4"	0.06-0.50"	100
983-3367	1/4" x 1"	0.25-0.75"	100

Grip range is from 25% to 75% of the nominal length for application in a thin material (rather than a thick solid).



Camtainer bolts

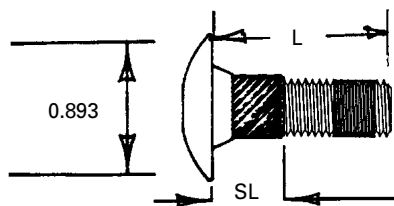
Camtainer fastening system for "FRP" trucks and trailers

The counter-clockwise knurling prevents twisting during assembly which permits fastener to be attached by a single person using ordinary tools.

Prod. #	L	SL
979-2777	5/16 - 18 x 1"	0,250"
979-2819	5/16 - 18 x 1 7/16"	0,250"

Recommended hole: 13/32"

With a 1/2"-long nut:
Minimum grip: L of Camtainer fastener + 0.155".
Maximum grip: L + 0.196".
Plus 0.125" if a 5/8" nut is used.



Camtainer nuts

The cold-molded, TORX-type nut permits high positive torque and facilitates maintenance.

Prod. #	L
979-2907	5/16 - 18 x 3/8"
979-2897	5/16 - 18 x 1/2"
979-2914	5/16 - 18 x 5/8"

