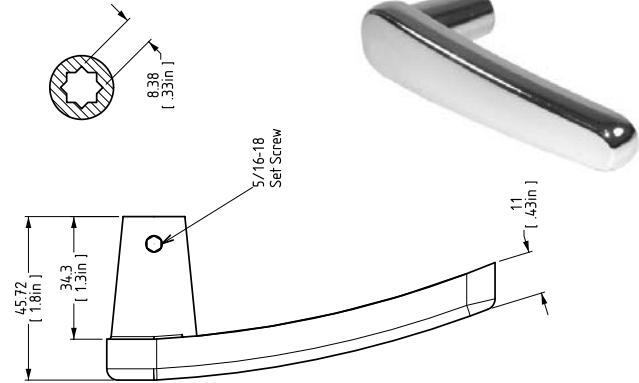
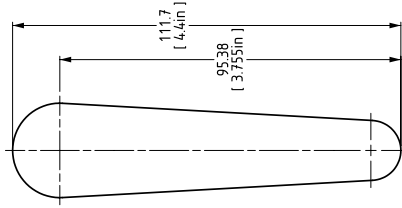


Interior "L" handle

Prod. #: **681-0001**

Chrome plated
Zinc die cast.

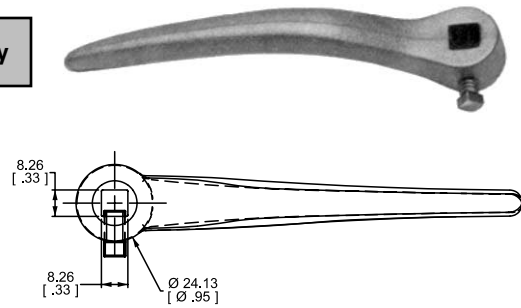
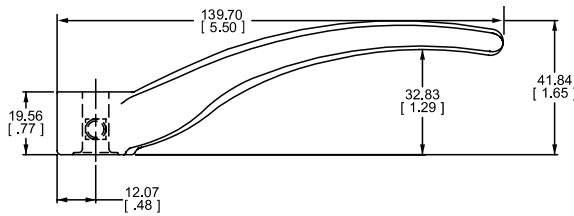


Interior curved handle

Prod. #: **681-0019**

For indoor use only

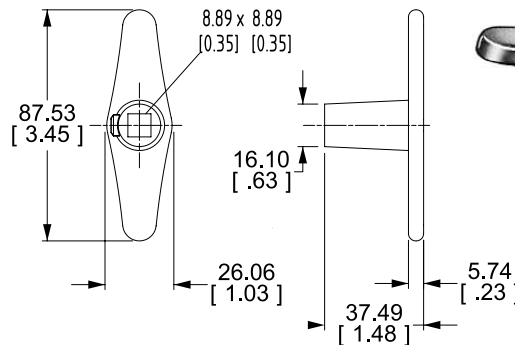
Zinc plated



Interior "T" handle

Prod. #: **681-0058**

Chrome plated zinc die cast.



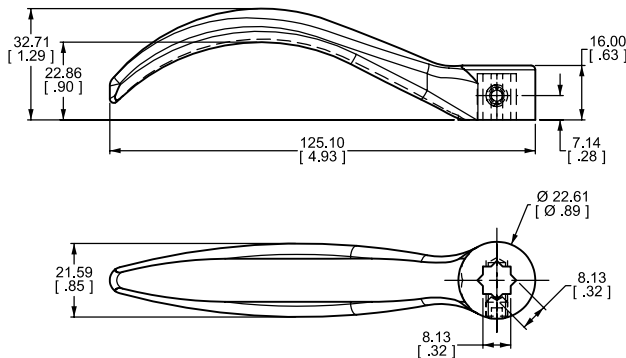
Interior curved handles

Prod. #: **681-1037**

Zinc die cast

Prod. #: **681-1044**

Chrome finish

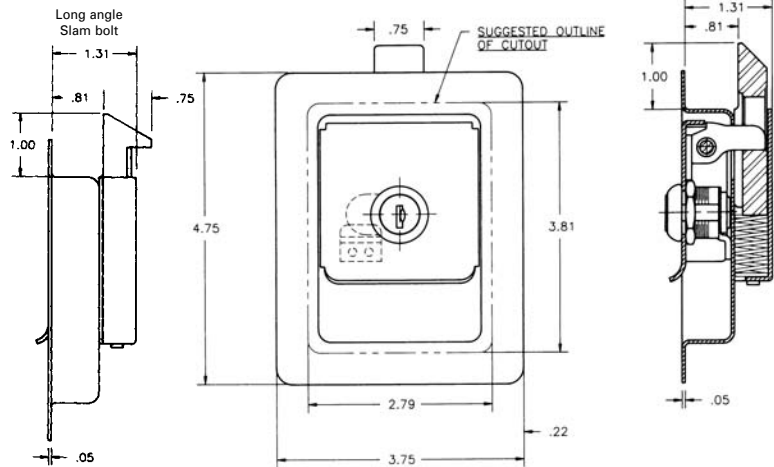


REV. 05/2011

Paddle handle

Prod. #: **695-1098** Keyed CH 501

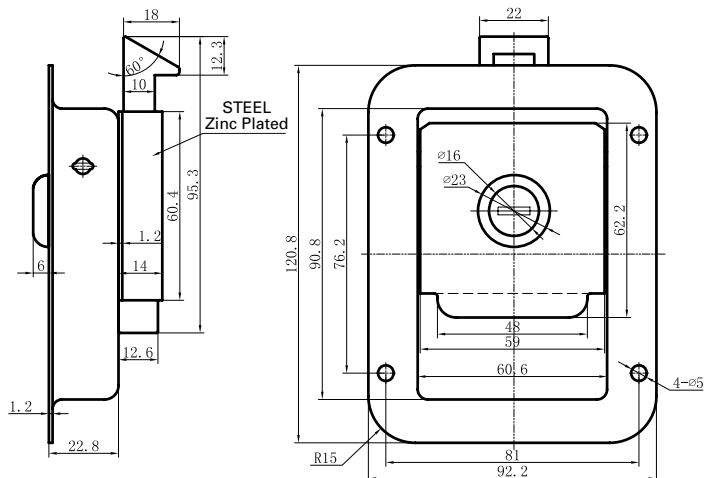
4.75" x 3.75"
Zinc plated
No holes
30° long angle slam bolt



Stainless steel paddle handles

4.75" x 3.63"
Stainless steel
4 mounting holes
30° bolt

Prod. #	Key #
696-0198	Non-locking
695-0048	# 700
695-0055	# 701



REV. 05/2011

Sliding door lock with handle

Zinc plated

Distance between hooks: 5 1/2"

Prod. #	Case thickness	Body Size	Hole for square rod
705-5143	3/4"	2 1/2" x 5 5/16"	5/16"

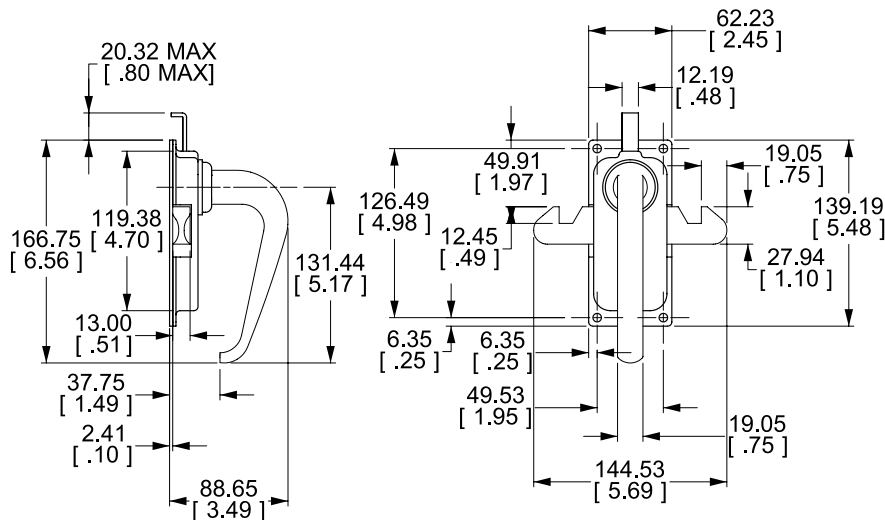
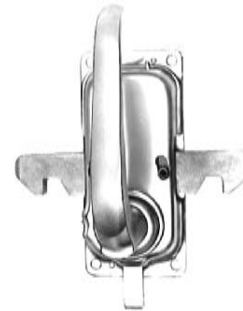


Sliding door lock with handle

Zinc plated

Distance between hooks: 5 45/64"

Prod. #	Case thickness	Body size	Hole for square rod
705-0000	7/8"	2 7/16" x 5 1/2"	3/8"



REV. 05/2011

Refrigerator door latch

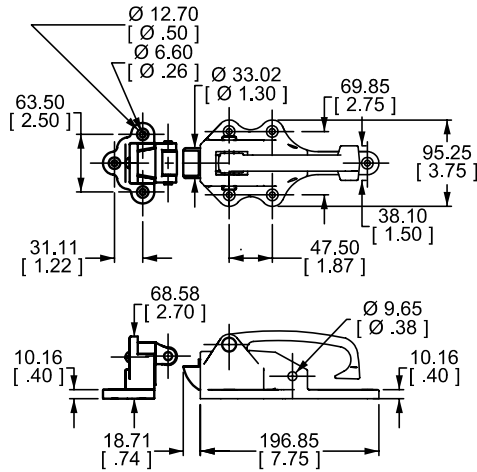
Prod. #: **709-0035**

Zinc plated
Cast steel body, handle of malleable cast iron.

Strike adjustable: $-\frac{1}{8}$ " to $+\frac{5}{16}$ " (included)
Overall installed length: 11"



For indoor use only



Refrigerator door latch

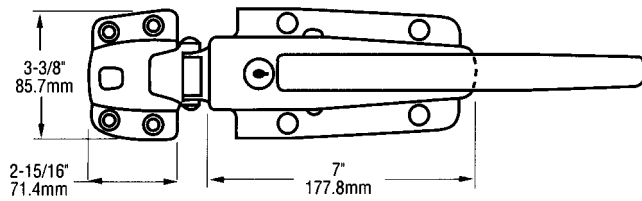
Prod. #: **709-0067**

Locking
Chrome polished finish.
Body made of zinc casting and handle of forged brass.
Striker not included
Overall installed length: $13 \frac{3}{16}$ "

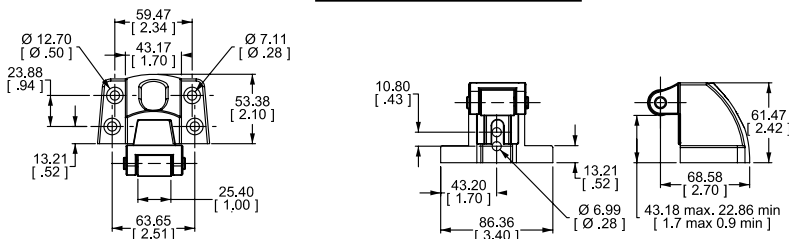


Strikers, chrome finish.

Prod. #	Adjustable strikes
709-0243	$-\frac{1}{8}$ " to $+\frac{1}{4}$ " (ill.)
709-1310	$\frac{3}{4}$ " to $1 \frac{1}{2}$ "
709-1335	$1 \frac{3}{4}$ " to $2 \frac{1}{2}$ "



For indoor use only



REV. 05/2011

Refrigerator door latch

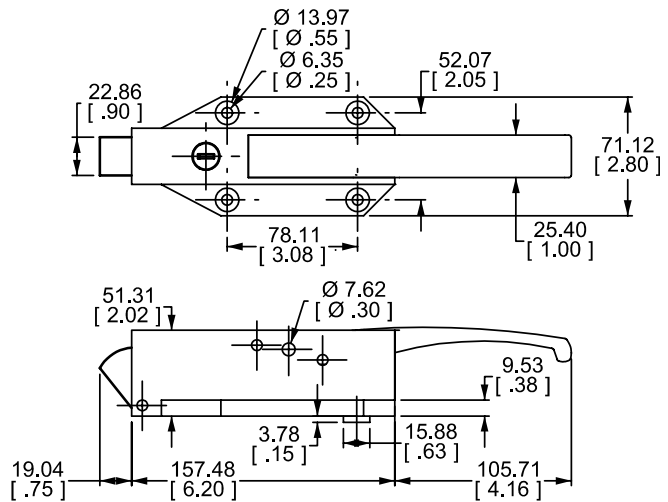
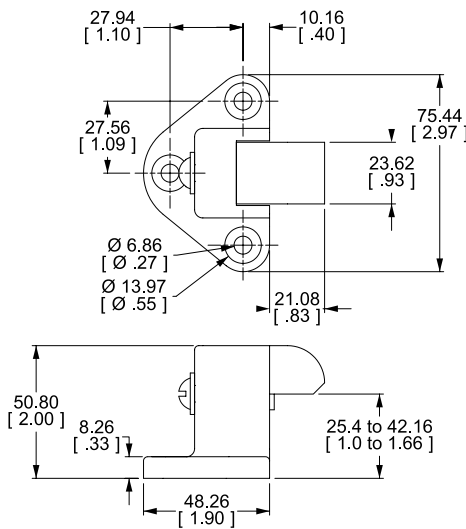
Prod. #: 709-1085

Locking
Zinc casting with polished chrome finish.
Striker not included.

Striker

Prod. #	Strike adjustable
709-0571	-1/8" to +1/4"

For indoor use only



Inside push handles

Handles for opening doors from inside of refrigerated compartments
Zinc plated steel rod and plate.
Safety Glow™ plastic handle.

Prod. #	Overall length
709-0162	9 1/2"
709-0275	10 1/2"

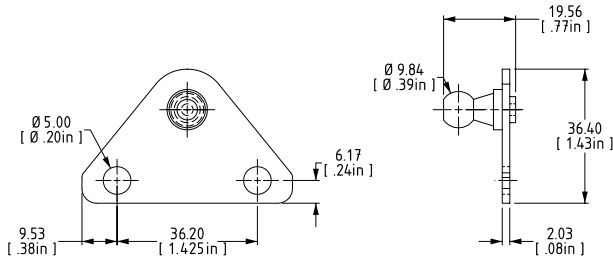
For indoor use only



REV. 05/2011

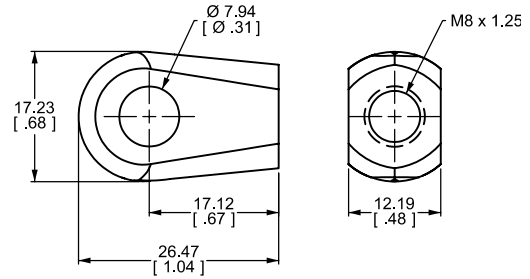
Mounting bracket

Prod. #: **777-4557** 10 mm ball — Steel



Eye type end fitting

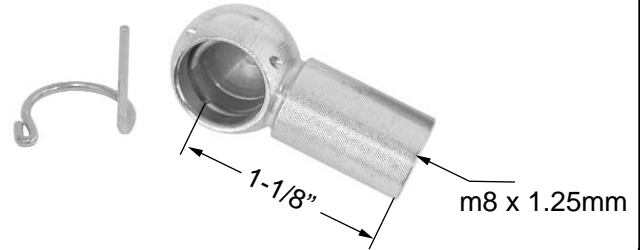
Prod. #: **777-9996**



Ball type end fitting

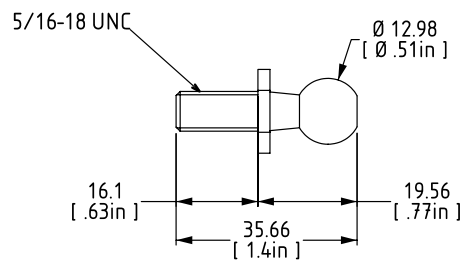
Prod. #: **777-7004** End fitting & clip
 Prod. #: **777-7702** Safety clip only

For 13 mm ball stud



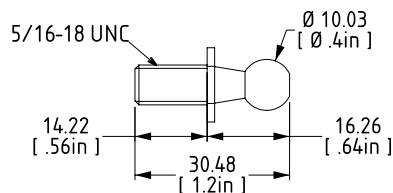
Ball stud

Prod. #: **777-7017** 13 mm ball — Steel



Ball stud

Prod. #: **777-7036** 10 mm ball — Steel



REV. 05/2011

Steel continuous hinges

All hinges are standard unless specified otherwise. Dimensions are in inches.

Prod. #	Gauge	Open width	Length	Pin diameter	Length of knuckles	Holes	Weight (lbs.)
751-0593*	0.030	1.063	72	0.090	0.25	no	0.92
751-0018	0.040	1.25	72	0.090	0.50	no	1.36
751-0057	0.040	1.50	72	0.090	0.50	no	1.50
751-0314	0.060	1.50	72	0.125	0.50	no	2.60
751-0089	0.060	2.00	72	0.187	1	no	3.70
751-0106	0.075	2.00	72	0.250	1	no	5.00
751-0152	0.075	2.50	72	0.250	1	no	5.60
751-0265	0.090	2.50	73,50	0.250	1.75	no	6.10
751-0233	0.075	3.00	72	0.250	1	no	6.75
751-0219**	0.075	3.00	72	0.250	1	no	6.75
751-0642	0.125	3.00	90	0.375	2	no	15.00
751-0184	0.075	3.50	72	0.250	1	no	7.50
751-0272	0.090	3.50	73,50	0.250	1.75	no	9.60
751-0579	0.125	5.00	72	0.375	2	no	20.00

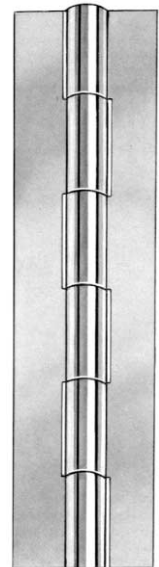
* Quik-a-line

** Both leaves half swaged

Steel continuous hinges with brass pin

All hinges are standard unless specified otherwise. Dimensions are in inches.

Prod. #	Gauge	Open width	Length	Pin diameter	Length of knuckles	Holes	Weight (lbs.)
751-0096	0.060	2.00	72	0.187	1	no	3.90
751-0113	0.090	2.00	73.5	0.250	1.75	no	5.90
751-0177	0.075	2.50	72	0.250	1	no	5.68
751-0240	0.075	3.00	72	0.250	1	no	6.80



D

HINGES

REV. 05/2011

Faucher general purpose silicone sealants

General purpose RTV sealant for bonding and sealing applications formed in place gasketing, space filling, etc. Will not sag or run.

Temperature range:
-85 degree F to 450 degree F.

Tack free time 15-20 minutes.

FDA approved.

Prod. #	Colors	Cartridge	Case
642-0474	Clear	300 ml	24
642-0435	White	300 ml	24
642-0442	Black	300 ml	24
642-0467	Aluminum	300 ml	24

Sold per case only.



General purpose silicone sealant

Nuflex 302

General purpose RTV sealant for bonding and sealing applications formed in place gasketing, space filling, etc. Will not sag or run.

Temperature range:
-85 degree F to 450 degree F.

Tack free time 15-20 minutes.

FDA approved.

Prod. #	Color	Tube	Case
642-0107	Clear	80 ml	24

Sold per case only.



Hi temperature silicone sealant

Nuflex 302

Will not sag or run.

Can be used on industrial furnaces, doors, wood, dryers etc.

Temperature range:
-85 degree F to 600 degree F

Tack free: 15-20 minutes

Prod. #	Color	Cartridge	Case
642-0153	Red	300 ml	24

Sold per case only.



Butyl-based sealant

Manus-Bond 501-A

Rapidly forms a skin.

Can be painted.

Good bonding.

Remains flexible.

Shelf life 12 months.

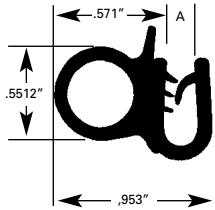
Prod. #	Color	Cartridge	Case
641-1254	Grey	312 ml	36



Edge trim with weatherstrip

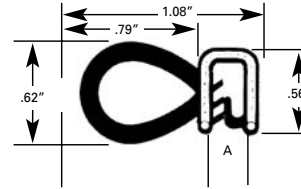
With closed cell neoprene bulb seal.

Prod. #	Color	For material up to	Roll	
623-4478	Black	1 ¹ / ₆₄ "	165' (50.3 m)	min: 15' (4.6 m)



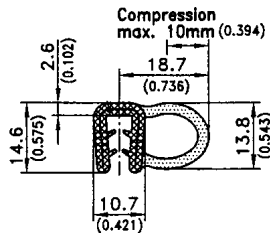
Edge trim with weatherstrip

Prod. #	Color	For material up to	Roll	
623-6683	Black	1 ¹ / ₈ "	750' (228.5 m)	min: 25' (7.6 m)



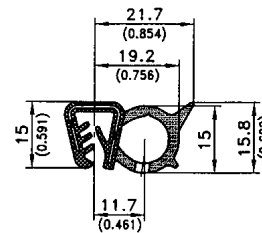
Edge trim with weatherstrip

Prod. #	Color	For material up to	Roll	
622-0002	Black	1 ¹ / ₈ "	25 m (82')	min: 5 m (16.4')



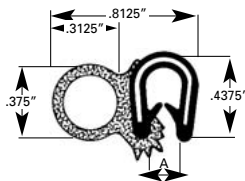
Edge trim with weatherstrip

Prod. #	Color	For material up to	Roll	
622-0179	Black	5 ⁵ / ₃₂ "	75 m (246')	min: 5 m (16.4')



Edge trim with weatherstrip

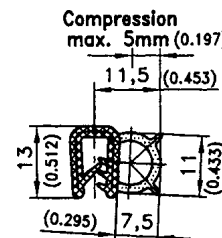
Prod. #	Color	For material up to	Roll	
623-4453	Black	1 ¹ / ₈ "	82' (25 m)	min: 25' (6.2 m)



Edge trim with weatherstrip


Prod. #	Color	For material up to	Roll	
622-0041*	Black	1 ¹ / ₈ "	50 m (164')	min: 5 m (16.4')

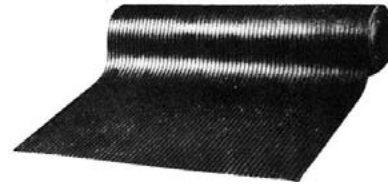
*NBR (nitrile), oil and fuel resistant.



Black rubber mattings

Stay flexible to -40°C
Not to be compared with lower-priced vinyl mattings.


Prod. #	Size	
626-0439	1/8" x 36"	min:
626-0090	1/8" x 48"	1 yd
626-0037	1/4" x 36"	

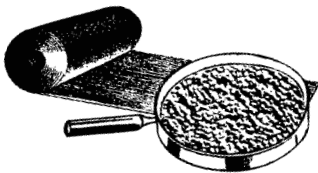


Roll of approx. 25 yards (75')

Pebble embossed vinyl matting

Sponge matting

Prod. #	Color	Size	Roll	
622-0059	Black	1/4" x 60"	90' (27.5 m)	min: 1' (0.30 m)



Self-adhesive anti-skid tape

Black

Prod. #	Size
900-2588	1" x 60'
900-2556	2" x 60'
900-2549	4" x 60'
900-2595	6" x 60'
900-2605	12" x 60'



PVC interlocking tile

Prod. #: **626-1383** Black 12" x 12"

Thickness 3/4"
Sold per box of 36.

Male side edge

Prod. #	Colors
626-0213	Black
626-0189	Red
626-0132	Yellow

Female side edge

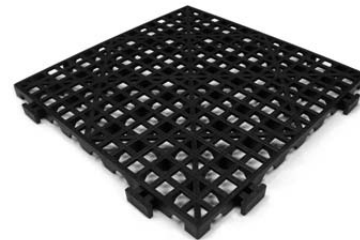
Prod. #	Colors
626-0220	Black
626-0196	Red
626-0171	Yellow

Prod. #: **626-1400** Black 12" x 12"

Prod. #: **626-0206** Blue 12" x 12"

Prod. #: **626-0238** Red 12" x 12"

Thickness 9/16"
Sold per box of 36.



T

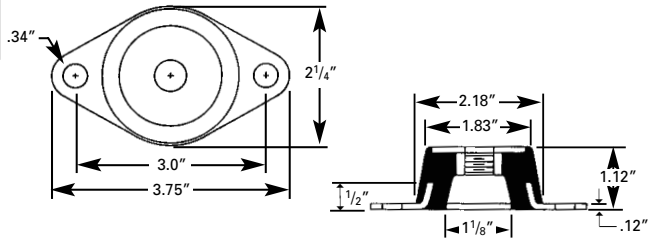
RUBBER PRODUCTS

REV. 05/2011

Vibration mount bumper

Prod. #: **847-0417** DURO-40

Vibration mount bumper with inside thread of $\frac{3}{8}$ - 16.

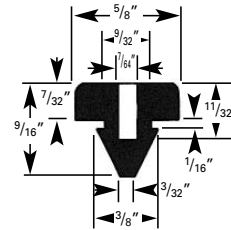


Small rubber bumper

Prod. #: **624-4194**

Black

Minimum of 25

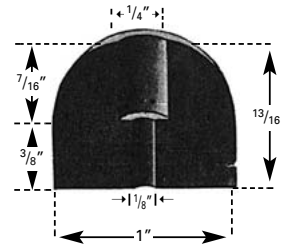


Small rubber bumper

Prod. #: **624-6003**

Black

Minimum of 25

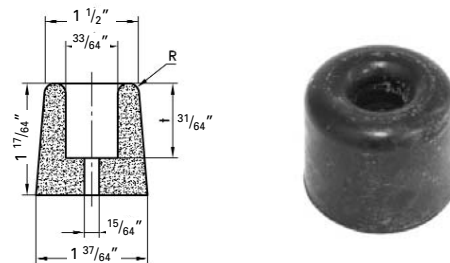


Small rubber bumper

Prod. #: **624-0030**

Black

Minimum of 25

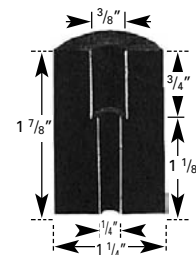


Small rubber bumper

Prod. #: **624-6035**

Black

Minimum of 25

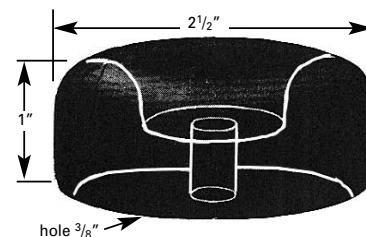


Small rubber bumper

Prod. #: **624-6028**

Black

Minimum of 25



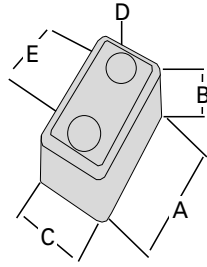
REV. 05/2011

Rubber bumper

Prod. #: 625-6053

A: 4 7/8"
B: 3 1/2"
C: 3 1/8"
Holes: D: 1/2"
E: 2 1/2"

Minimum of 12

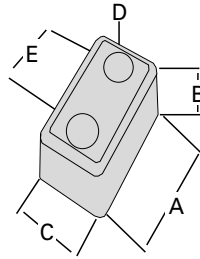


Rubber bumper

Prod. #: 625-6127

A: 6
B: 3 1/2"
C: 2 7/8"
Holes: D: 1/2"
E: 3"

Minimum of 12

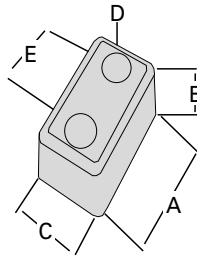


Rubber bumper

Prod. #: 625-6102

A: 6
B: 3 1/4"
C: 3 15/16"
Holes: D: 1/2"
E: 2 1/2"

Minimum of 12

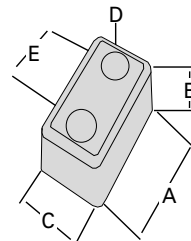


Rubber bumper

Prod. #: 625-6046

A: 7 3/4"
B: 3 1/8"
C: 3"
Holes: D: 1/2"
E: 3 3/8"

Minimum of 12



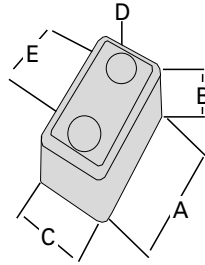
* Personalize your bumpers with your logo (minimum order required).

REV. 05/2011

Rubber bumper

Prod. #: 625-0024

A: 16"
B: 2"
C: 2 3/8"
Holes: D: 3/8"
E: 6 1/2"

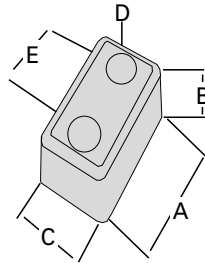


Minimum of 12

Rubber bumper

Prod. #: 625-6092

A: 8 1/2"
B: 2"
C: 1 7/8"
Holes: D: 11/32"
E: 4 7/8"

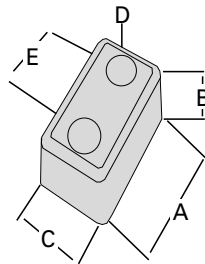


Minimum of 12

Rubber bumper

Prod. #: 625-6007

A: 7 11/16"
B: 2"
C: 2 1/4"
Holes: D: 3/8"
E: 4 1/2"



Minimum of 12

* Personalize your bumpers with your logo (minimum order required).

REV. 05/2011

Drills and taps in a single operation. In zinc plated steel.

Piercing capacity in metal base: Screw size no. 10 with #2 bit = 0.110", with bit #3 = 0.175"
Screw size no. 12 with #2 bit = 0.140", with bit #3 = 0.210"

Threads 10/24 and 12/24 are not recommended if the metal base is less than 0.110" thick, which is too thin to form a thread.

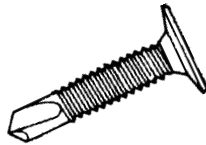
Wafer head self drilling metal screws

For plywood up to 3/8" thick. Finish: zinc

Prod. #	Dimensions	Bit	Bulk/Qty
980-0001	10 - 24 x 3/4"	#3	8,000
980-0019	10 - 24 x 1"	#3	5,000
980-0026	10 - 24 x 1 1/4"	#3	4,000

Box of 1000

Some parts may be lead time items. Consult our sales department for availability.



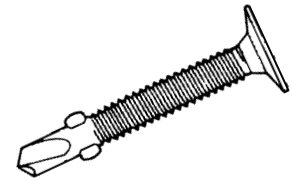
Wafer head self drilling metal screws

With wings for plywood 1/2" and up. Finish: zinc

Prod. #	Dimensions	Bit	Bulk/Qty
980-0097	12 - 24 x 2"	#3	1,500

Box of 1500

Some parts may be lead time items. Consult our sales department for availability.

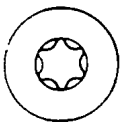


Floor screws - F-type

High quality wood floor screws, equivalent to the SAEJ81 standard (torsion and thread).

Prod. #	Dia. x Length	Finish	Recommended driver bits
979-0018	1/4-20 X 1 1/2"	Black	1/4" Hex. x 1"
979-0028	1/4-20 X 2"	Black	1/4" Hex. x 2"
979-0032	1/4-20 X 2-1/2"	Black	5/16" Hex. x 1 1/4"
979-0057	5/16-18 X 2"	Black	1/4" Hex. x 1"
979-0064	5/16-18 X 2-1/2"	Black	1/4" Hex. x 2"

Sold per box only

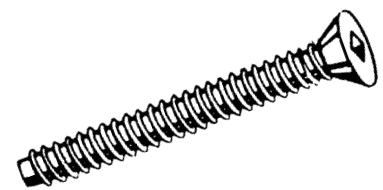


Floor screws - B-type

Flat head with square hole

Prod. #	Dia. x Length	Finish	Recommended bit
979-2569	14 x 1 1/2"	Zinc	#3
979-2583	14 x 2"	Zinc	bit
979-2600	14 x 2 1/2"	Zinc	
979-2618	14 x 3"	Zinc	

Box of 1000



REV. 05/2011

Steel tracks

For partitions and sliding doors in commercial vehicles, tractor cabins, industrial cabinets, or for suspending canvas partitions in factories, warehouses, etc...

Suggested spacing for points of attachment 18"

16 GA GALVANIZED STEEL TRACK

Exterior dimensions: 1 7/16" wide x 1 1/4" high.

For doors over 125 lbs.

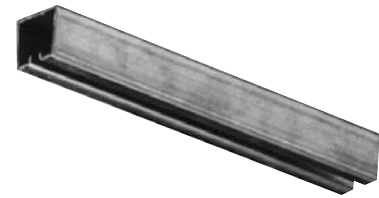
Prod. #	Length
706-1517	42"
706-1034	48"
706-1041	60"
706-1066	72"
706-1073	96"
706-1080	120"
706-1115	144"
706-0351	180"
706-1161	240"
706-1556	300"

12 GA GALVANIZED STEEL TRACK

Exterior dimensions: 1 19/32" wide x 1 29/64" high

For doors over 250 lbs.

Prod. #	Length
706-1669	240"



Track connector

Prod. #: **706-1443**

4" long — 16 Ga. galvanized steel



Track connector (Face mount)

Prod. #: **706-1429**

4" long — 16 Ga. galvanized steel



Track connector (Side mount)

Prod. #: **706-1732**

4" long — 12 Ga. galvanized steel



REV. 05/2011

Translucent fiberglass skylight


³/₃₂" thick translucent fiberglass skylight brings daylight inside the van.
Easy to install. The rubber mounting ring is completely sealed.

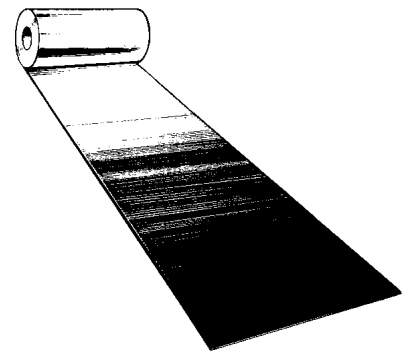
Prod. #	
775-0002	For 12" diameter opening
775-0027	For 16 ³ / ₁₆ " diameter opening



Aluminum roof sheet

Half-hard aluminum, with good corrosion resistance and easily formed.
Alloy: 3003H16

Prod. #			Approx. weight/lbs. per linear foot	Weight/lbs. per inch
878-0070	102" X 0.032"	Sold per inch	3.80	0.32

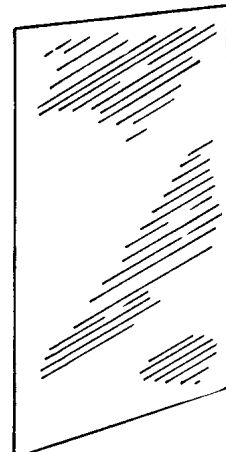


Aluminum side panels

Smooth polar white one side only.
PVC covered

Prod. #	Width X length	Thickness	Approx. weight/lbs.
875-1351	49" X 79"	0.040"	15.59
875-1369	49" X 85"	0.040"	16.78
875-1383	49" X 97"	0.040"	19.14
875-1400	49" X 103"	0.040"	20.33
875-1496	49" X 110"	0.040"	21.71

Some parts may be lead time items.
Consult our sales department for availability.



TRUCK BODY COMPONENTS

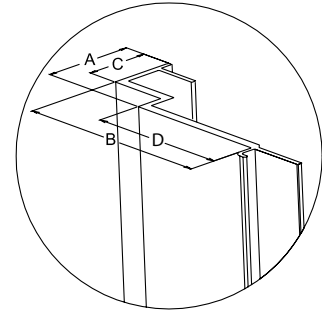


REV. 05/2011

Door jamb

Dimensions	mm	in.
A	43.30	1 ⁴⁵ / ₆₄ "
B	128.25	5"
C	30.60	1 ³ / ₁₆ "
D	70.78	2 ²⁵ / ₃₂ "

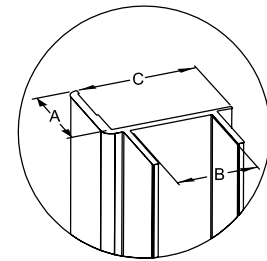
Prod. #	Length		Weight lbs.
	mm	in.	
875-2940	2,616	103"	10.26



Rear door frames

Dimensions	mm	in.
A	34.90	1 ³ / ₈ "
B	43.43	1 ²⁹ / ₃₂ "
C	61.84	2 ⁷ / ₁₆ "

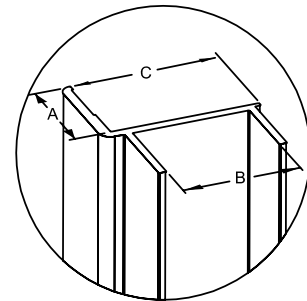
Prod. #	Length		Weight lbs.
	mm	in.	
875-0118	2,515	99"	6.02
875-0125	4,470	176"	11.00



Side door frame

Dimensions	mm	in.
A	31.72	1 ¹ / ₄ "
B	35.68	1 ¹³ / ₃₂ "
C	36.51	1 ⁷ / ₁₆ "

Prod. #	Length		Weight lbs.
	mm	in.	
875-3084	2,515	99"	6.05

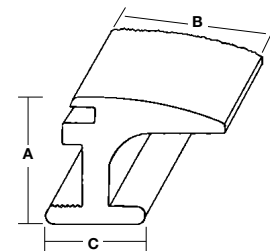


Door frame for utility bodies

Dimensions	mm	in.
A	23.53	0.92"
B	30.10	1.18"
C	18.80	0.74"

Prod. #	Length		Weight lbs.
	mm	in.	
875-4338	7,315	288"	12.37

To be used with the Faucher hinge # 754-0661 on page D15.

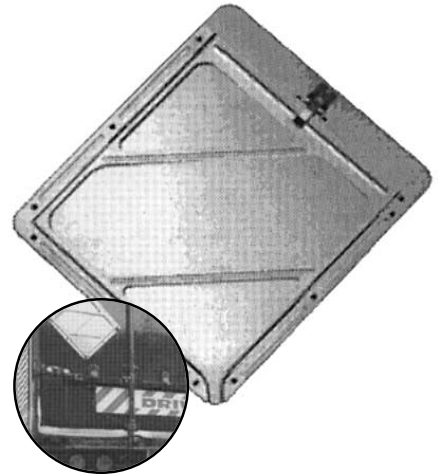


REV. 05/2011

Placard holders

Slide-N-Glide holders are made of 0.032" anodized aluminum. The installation holes are pre-drilled for quick mounting. The rounded corners ensure the safe use and handling of the holder. The unique designed back panel fitted with ridges allows the placard to be easily removed from the holder over the clip from above. The stainless steel clips function flawlessly over thousands of placard changes. The sturdy construction provides maximum performance and durability for years of use on the road. An affordable way to comply with the requisite warnings for hazardous materials on vehicles.

Prod. #	Dimensions	
776-0226	12 1/2" X 14 1/8"	Anodised aluminum
776-0258	12 1/2" X 14 1/8"	White painted aluminum
776-0995		Clip only



Small stainless steel placard holder

Prod. #	Dimensions	
776-0032	11 7/8" X 14 1/2"	Stainless steel



Rotary placard holder

Prod. #: **776-3146** White painted aluminum

Two flip charts: 1202 and 1203



Cables

Prod. #		Length
708-0157	Galvanized steel	110"
708-1739	Stainless steel	110"
708-0171	Galvanized steel	115"
708-0164	Galvanized steel	130"

3/8" eyelet
Sold in multiples of 25.



REV. 05/2011

Rollers

Prod. #	Dia.	Shank	Length	
1) 708-0277	1"	7/16"	2 1/2"	
2) 708-0485	2"	7/16"	2 1/2"	
3) 708-2235	2"	7/16"	2 1/2"	(nylon)
4) 708-1834	2"	7/16"	6"	

Sold in multiples of 25.



Step bolts for hinges

Prod. #		
975-2171	1/4-20 x 1 1/4"	zinc
975-2326	1/4-20 x 1 1/2"	zinc

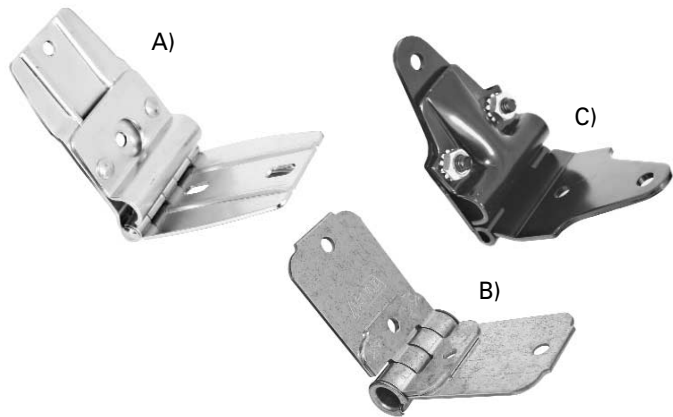
Sold in box of 100 pcs.
Nuts not supplied.



End hinges

Prod. #
A) 708-0686
B) 708-0527
C) 708-2228

Sold in multiples of 25.



Centre hinges

Prod. #
A) 708-0661
B) 708-1707
C) 708-2203

Sold in multiples of 25.

