

## Riveting tool

Prod. #: **903-0017** Tool

Shear-type riveting tool with ergonomic handles for comfortable operation.  
Drives rivets of all sizes including 1/4" structural rivets.  
23 1/2" height X 6 1/2" closed X 27 1/2" open.

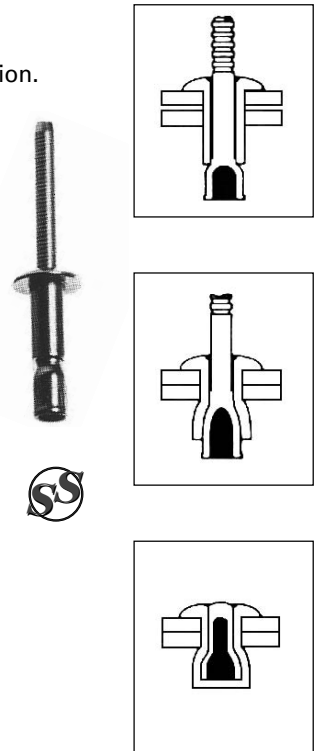
- Some parts may be lead time items. Consult our sales department for availability.



## Avdel's Monobolt

Avdel's Monobolt is a structural rivet which creates strong, uniform joints. It is possible to rivet different thicknesses with a single rivet length. The mandrel is sheared off at the head and cannot fall loose. Strong resistance to vibration.

Prod. #	Dia.	Grip range	Head Dia.	Qty/Box	Min. qty
<b>ALUMINUM</b>					
650-1074	1/4"	0.080"-0.375"	0.525"	2,000	100
650-1116	1/4"	0.350"-0.625"	0.525"	1,500	100
<b>STEEL</b>					
650-1028	1/4"	0.080"-0.375"	0.525"	2,000	100
650-1035	1/4"	0.080"-0.625"	0.525"	1,500	100
<b>STAINLESS STEEL</b>					
650-1081	1/4"	0.080"-0.375"	0.525"	2,000	100



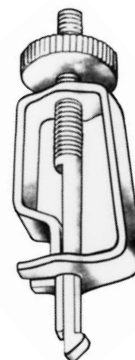
- Some parts may be lead time items. Consult our sales department for availability.

## Clamp

Clamp for temporarily attaching sheet metal to be riveted. Easy to use. Fastens without use of tools. Reduces assembly time. **Holds metal surfaces firmly in place.**

Prod. #  
**650-2984** For 3/16" dia. hole

- Some parts may be lead time items. Consult our sales department for availability.



Gripping the knurled nut at the top of the clamp, place the rod with hook and frame-tip in the appropriate-sized hole.



Screw the nut until it comes into contact with the frame and tighten.

REV. 07/2011

## Flowered stainless steel finish

Prod. #	Weight	Dimensions		
923-0087	42 lbs	18 "	18 "	24 "
923-0062*	57 lbs	18 "	18 "	36 "
923-0055*	71 lbs	18 "	18 "	48 "
923-0048*	80 lbs	24 "	24 "	36 "
923-0030*	100 lbs	24 "	24 "	48 "

\* With reinforced door



VARIOUS HARDWARE

## Flowered stainless steel finish (barn doors)

Prod. #	Weight	Dimensions		
923-0432	42 lbs	18 "	18 "	24 "
923-0457	57 lbs	18 "	18 "	36 "
923-0464	71 lbs	18 "	18 "	48 "
923-0471	80 lbs	24 "	24 "	36 "
923-0489	100 lbs	24 "	24 "	48 "
<b>With post:</b>				
923-0224	100 lbs	24 "	24 "	48 "

\* Also available, on demand, in black powder coated



## Polished stainless steel

Prod. #	Weight	Dimensions		
923-0136	42 lbs	18 "	18 "	24 "
923-0129*	57 lbs	18 "	18 "	36 "
923-0111*	71 lbs	18 "	18 "	48 "
923-0270*	86 lbs	18 "	18 "	60 "
923-0104*	80 lbs	24 "	24 "	36 "
923-0094*	100 lbs	24 "	24 "	48 "
923-0263*	115 lbs	24 "	24 "	60 "

\* With reinforced door



## Black powder coated with stainless steel door

Prod. #	Weight	Dimensions		
923-0016	42 lbs	18 "	18 "	24 "
923-0009*	57 lbs	18 "	18 "	36 "
923-0023*	71 lbs	18 "	18 "	48 "

\* With reinforced door



**Black powder coated**

Prod. #	Weight	Dimensions		
923-0217	42 lbs	18 "	18 "	24 "
923-0182	50 lbs	18 "	18 "	30 "
923-0175*	57 lbs	18 "	18 "	36 "
923-0168*	71 lbs	18 "	18 "	48 "
923-0288*	86 lbs	18 "	18 "	60 "
923-0150*	80 lbs	24 "	24 "	36 "
923-0143*	100 lbs	24 "	24 "	48 "

\* With reinforced door



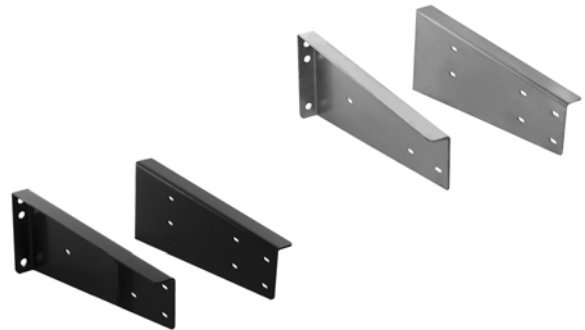
**Brackets for tool boxes**

Stainless steel

Prod. #	Dimensions	
923-0496	6.30 " (H)	16.50 " (L)
923-0376	8.10 " (H)	20.50 " (L)

Steel

Prod. #	Dimensions	
923-0506	6.30 " (H)	16.50 " (L)
923-0351	8.10 " (H)	20.50 " (L)



**Replacement parts for tool boxes**

- Prod. #: **673-0349** Polyamide recessed T handle (ill.)
- Prod. #: **699-7695** Stainless steel recessed T handle
- Prod. #: **697-0358** Replacement cylinder



- Prod. #: **777-5511** Gaz cylinder



- Prod. #: **923-0626** Polyamide hinge



Some parts may be lead time items. Consult our sales department for availability.

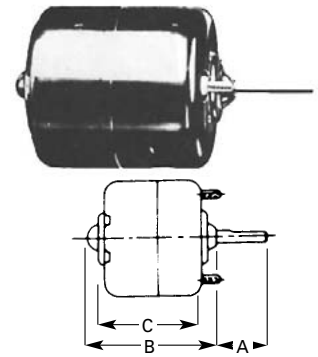
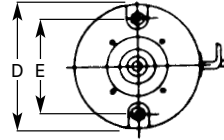


## Replacement motors

Prod. #	Voltage	A	B	C	D	E	Shaft	Rotation
805-1198	12V	1.200	3.34	2.550	2.94	2.312	1/4"	CCW
805-1409	12V	1.687	3.89	3.060	2.94	2.312	5/16"	CCW

4.5 amps.

• Some parts may be lead time items. Consult our sales department for availability.



## Flexible hose

Prod. #: **805-0349**

Accordion-type flexible hose for defroster.  
Diameter: 2"  
Length: 4'



## Nozzle

Prod. #: **805-1374**

Metal defroster nozzle for 2" hose.  
7 1/2" overall length



## Hose clamps

Stainless steel hose clamps with zinc plated screw system

Prod. #	Dimensions
805-0204	1/2" to 1"
805-0028	9/16" to 1 1/8"
805-0035	11/16" to 1 1/4"

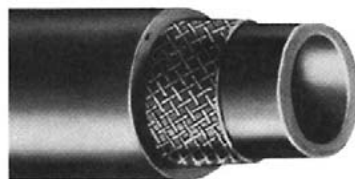
50 per box



## Rubber hose for hot water

In black single-ply rubber

Prod. #	Inside diameter	Roll
805-0451	5/8"	50'



## Control valve

Prod. #: **805-0236**

In black PVC  
5/8" tube X 5/8" tube



REV. 07/2011

**Ventilator**

By virtue of their form, these vents cause air to be drawn out when the vehicle is in motion.

Steel with primer coating.  
Supplied with gasket  
Dim.: 2" W x 10" L x 12" D

Grill fits mounting holes on above vent.  
**Must be ordered separately.**  
Zinc plated  
Diameter: 7 1/4"

Prod. #: **801-1036** Ventilator, without grill  
Prod. #: **801-1029** Adjustable interior grill



**Static exhaust vent**

Prod. #: **801-1131**

Expels air at a rate of 30 cu. ft./min. at 48 Km/h.  
Interior grill not included.  
See below.  
Dim.: 3 11/16" W x 9" L x 15" D



**Static intake vent**

Prod. #: **801-1117**

Draws outside air inside  
Interior grill not included.  
See below.  
Dim.: 2 5/8" W x 9" L x 15" D



**Exhaust power ventilation**

Prod. #: **801-1170**

Expels air toward the outside.  
Flow rate of 200 cu. ft./min. in the stationary position.  
Install with grill facing toward the back of the vehicle.  
Dim.: 6 1/4" W x 11" L x 15" D  
Supplied with inside grill **801-1124**, and switch.  
**Replacement part 805-1409:** 12 volt motor



**Exhaust power ventilation**

Prod. #: **801-1149**

Expels air toward the outside.  
Flow rate of 100 cu. ft./min. in stationary position.  
Interior grill is not included.  
See below.  
Dim.: 3 11/16" W x 9" L x 15" D  
**Replacement part 805-1198:** 12 volt motor



**Power intake vent**

Prod. #: **801-1156**

Draws outside air inside.  
Interior grill is not included.  
See opposite.  
Dim.: 2 5/8" W x 9" L x 15" D  
**Replacement part 805-1198:** 12 volt motor



**Inside grills**

Prod. #	Diameter	Finish	
A - 801-1188	8"	Black primer	Adjustable
B - 801-1124	8"	Black primer	Screen only
C - 801-1195	8"	Polished chrome	Adjustable



• Some parts may be lead time items. Consult our sales department for availability.

REV. 07/2011

## Instant connector

Prod. #: 841-0376

- Economical and fast.
  - No wire stripping.
  - Works on 14 to 18 gauge wire.
  - No special tool needed; just common pliers do the job.
  - No cutting of run wire needed for tap-off.
  - Positive and long-lasting contact.
  - Pre-insulated.
  - Save 50% on installation costs.
- Dimensions:  $1\frac{3}{16}$ " long. x  $\frac{17}{32}$ "  
Sold in boxes of 100.

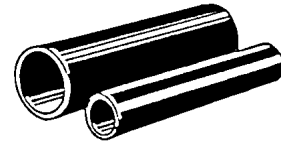


## Shrink tubing

Prod. #: 847-1611 Diameter:  $\frac{3}{16}$ "  
Prod. #: 847-1629 Diameter:  $\frac{1}{4}$ "

Heat shrink tubing 48" long.

- Some parts may be lead time items. Consult our sales department for availability.



## Electrical tape

Prod. #: 847-0110

All-purpose PVC electrical tape.

- Sticks better
  - Waterproof
  - Economical
- Dimensions:  $\frac{3}{4}$ " x 66'.



## Bulbs

Prod. #	Supplier #	Voltage	Lumens	Base
845-0185	1156	12	32	S.C. bay.
845-0192	1157	12	32/3	D.C. index
845-0040	1295	12	50	S.C. bay.



S.C. bayonet

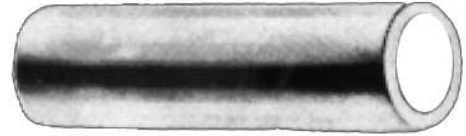


D.C. index

**Natural polyethylene tubing**

Color: Whitish.  
200 or 2,000 ft per roll.  
(We do not cut)

Prod. #	Roll	I.D.	O.D.
847-0865	200 ft.	1/4"	5/16"
847-0872	200 ft.	5/16"	3/8"
847-0907	200 ft.	1/2"	9/16"

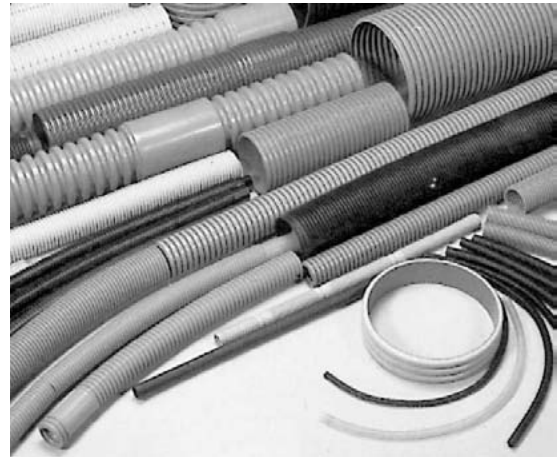


• Some parts may be lead time items. Consult our sales department for availability.

**Fire retardant split tubing (grey)**

Polyethylene

Prod. #	I.D.	Roll
847-0167	3/8"	100'
847-0128	1/2"	100'

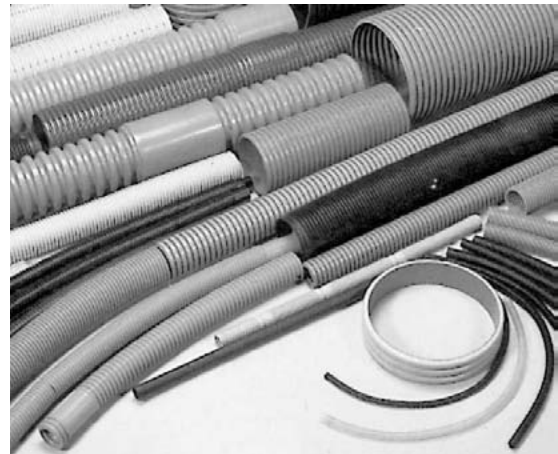


• Some parts may be lead time items. Consult our sales department for availability.

**Non-fire retardant split tubing (black)**

Polyethylene

Prod. #	I.D.	Roll
847-1594	1/4"	2,500'
847-1643	3/8"	1,500'
847-1668	1/2"	900'
847-1763	1"	250'



• Some parts may be lead time items. Consult our sales department for availability.

REV. 07/2011

**LIGHTS & ACCESSORIES**

**M**